

Operations

A WPCF Publication
For Wastewater Professionals

Forum

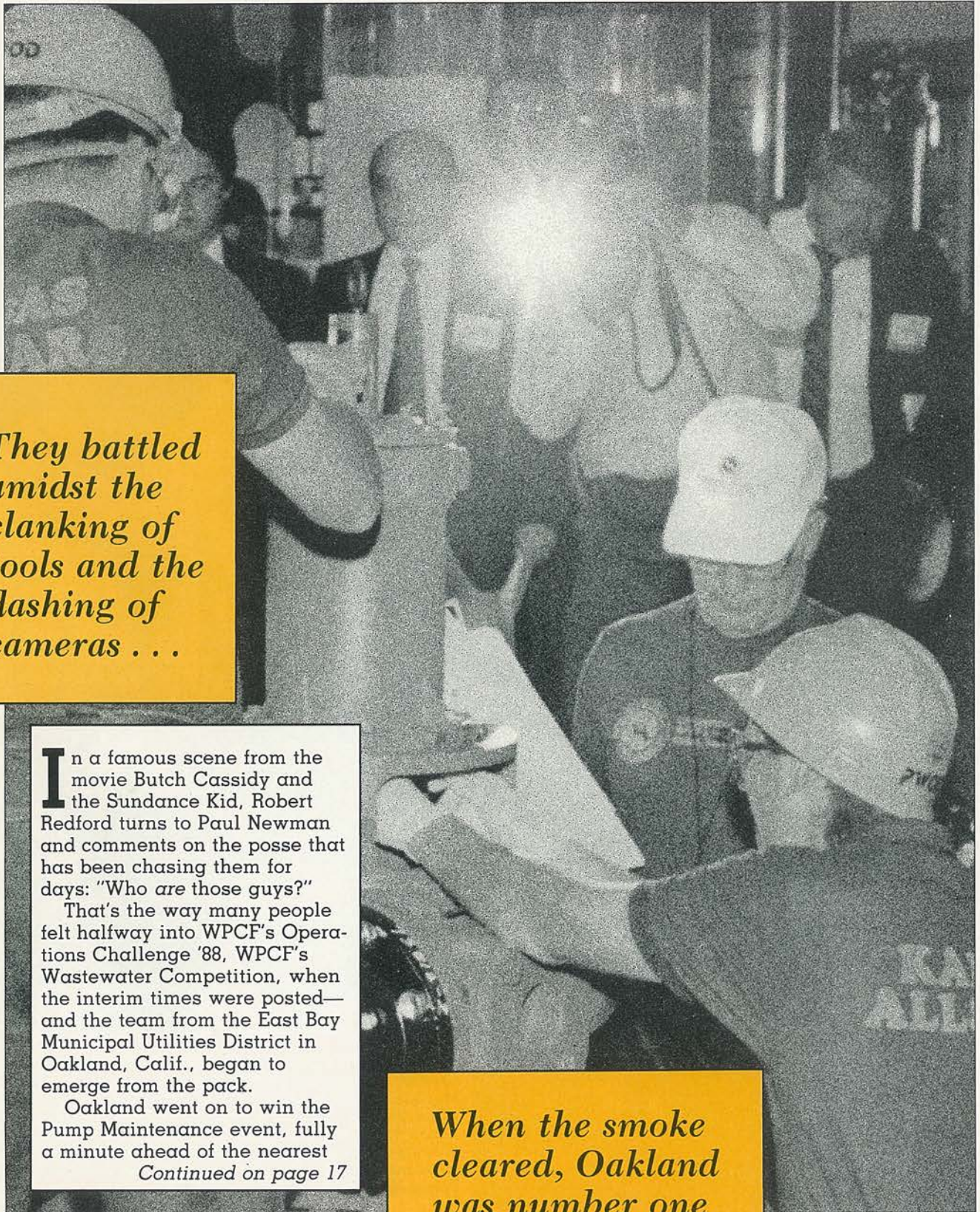
Volume 5, Number 11, November 1988



PUMPING G O L D

East Bay MUD Wins
Operations Challenge '88

Operations Challenge '88



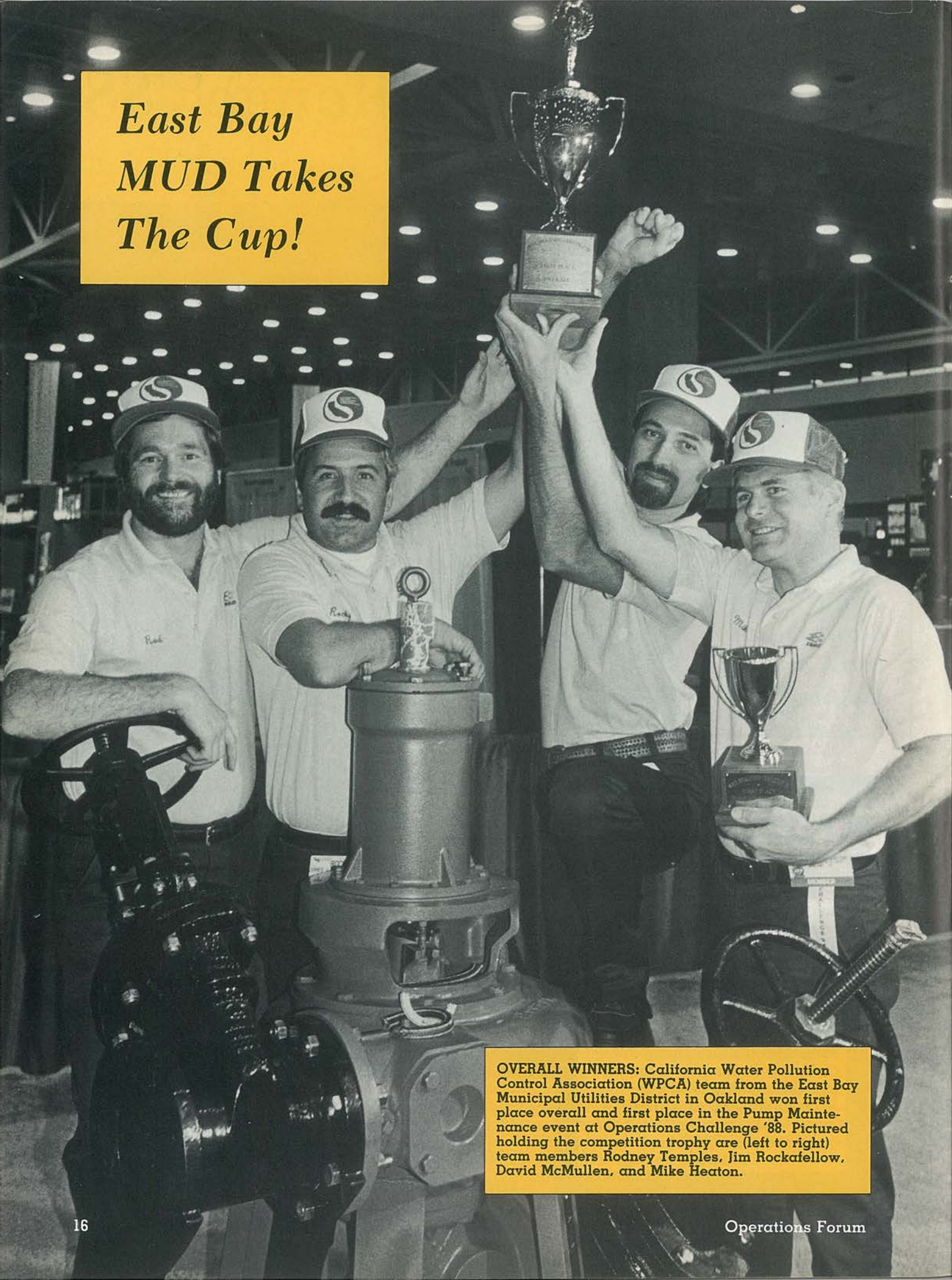
They battled amidst the clanking of tools and the flashing of cameras . . .

In a famous scene from the movie *Butch Cassidy and the Sundance Kid*, Robert Redford turns to Paul Newman and comments on the posse that has been chasing them for days: "Who are those guys?" That's the way many people felt halfway into WPCF's Operations Challenge '88, WPCF's Wastewater Competition, when the interim times were posted—and the team from the East Bay Municipal Utilities District in Oakland, Calif., began to emerge from the pack. Oakland went on to win the Pump Maintenance event, fully a minute ahead of the nearest

Continued on page 17

When the smoke cleared, Oakland was number one

*East Bay
MUD Takes
The Cup!*



OVERALL WINNERS: California Water Pollution Control Association (WPCA) team from the East Bay Municipal Utilities District in Oakland won first place overall and first place in the Pump Maintenance event at Operations Challenge '88. Pictured holding the competition trophy are (left to right) team members Rodney Temples, Jim Rockafellow, David McMullen, and Mike Heaton.

competition—the other team from California. The Oakland team, with all four members from the East Bay MUD, also scored second in the Safety event; second in the Laboratory event, and fourth in the Process Control event. The only event in which they did not score well was Collection Systems.

Oakland's strength was so dominant, it nearly overshadowed very strong performances by Pennsylvania's team, from Hatfield Township Municipal Authority; and by Tampa, Florida, which won the Laboratory event and did well in Pumps, Safety, and Process Control.

For all 22 teams that appeared at the Competition, the events were exciting, rewarding, and enlightening. The team members were participating in what was the first big-time event of its kind. Many participants said that they hoped to be back next year.

The Challenge began Tuesday evening, October 4, with a meeting of all participants and judges. Since this was the first time that anything like this had been tried with a national meeting, there were many questions. In fact, competition organizers, judges, and participants could probably have devoted the entire evening to questions. But after 90 minutes, the conference managers needed to walk the group through the exhibition.

On Wednesday, October 5, the competition began at 8:15 A.M., about 45 minutes before the convention center opened the exhibition floor. The Competition began pretty much on time, except that some equipment was a little late getting to the convention floor. Within a short time, however, all five events were well under way.

Judges from WPCF Committees helped in most events (see page 18 for a full listing of equipment donors and judges). The Safety event included members of the Safety and Occupational Health Committee. The Laboratory event resembled a meeting of the WPCF Lab Practices Committee. And the entire

Operations Division Managing Committee turned out to judge the process control problem.

Most Operations Challenge teams had their own outfits, although competition organizers gave each participant a hat and t-shirt. The best dressed competitors (unofficially) included a Long Island, N.Y. team dressed

describing the rules and regulations. As each team finished, the crowd would cheer.

As the final results were tabulated, a large crowd gathered on the exhibition floor. When the awards were presented, everybody cheered—including competitor teams. The whole competition was a huge suc-



Hatfield Township, Pa., Wins Second

SECOND PLACE OVERALL went to the Pennsylvania WPCA team from Hatfield Township, Pa. Team captain Joe Crocco (left) worked with Tom Hall (standing), Coley Bundick, and Sean Duffy.

in black jump suits; a Southern California team entirely in white; a Florida team with colorful t-shirts of Gainesville; and New England in red.

These teams were "pumped up." Just before the start of each event, the teams would gather at the entrance to the events, listening closely to the judges

cess, and undoubtedly will return next year.

The Events

Pump Maintenance—Three large (3-inch) pumps were set up for simulated repair. Each team had to remove and replace



THIRD PLACE OVERALL—Shown at left from Florida WPCA's team are David Vogel and Tom Gaisor. Other team members are Louis Gorga and Robert Driver. All are from the City of Tampa. The team took first place in the Laboratory event.

the packing on the pump and adjust the impellers. The winning time, 4 minutes and 19 seconds, was set by the Northern California team. Second place went to the California team from Riverside and Irvine Ranch. The Chesapeake association team, from Anne Arundel County Utilities, came in third, only 10 seconds below the second place team. Pennsylvania was a close fourth at 5:42.

Safety—Two team members donned safety air packs and masks and repaired a simulated leak in a 150-lb chlorine tank. This event attracted almost as much attention as the pump maintenance competition. Again, the two California teams took the top two places, doing the tasks—including returning the tools to the boxes—in less than 4 minutes. Third place went to the Maine team, representing the New England Water Pollution Control Association.

Laboratory—This event was actually three separate events: calibrating a pH meter, changing the membrane on a dissolved oxygen probe, and identifying microorganisms in a microscope. The microscope event was tricky and the most time-consuming part of the lab competition. The Tampa, Flori-

da, team, was an easy winner at 9:25, with the strong Oakland team placing second. The top teams finished about 3 minutes ahead of other teams.

Process Control—A sheet of plant performance data was given to each team, with the instructions simply to examine the data and select the correct answer. Most teams got the answer in less than 12 minutes, but all teams had to examine the information (to eliminate the chance of pure guesswork). Central States took this event, with a time of 6:53. Long Island, N.Y., came in second at 9:14. Kansas and Southern California took third and fourth place, respectively.

Collection Systems—Teams were given 18 minutes to watch a video tape and fill out a standard form for noting problems in the sewer line. Long Island, N.Y., placed first, with fewest errors and closest time to 18 minutes. Other teams were close behind. Missouri and Pennsylvania tied at 19:30; Dallas, Spartanburg and Central New York all had scores around 20 minutes.

Competition photos for each team and the top scores for each event appear on the next six pages. 🍄

The Team From Tampa Takes Third

Operations Challenge '88 Judges

Gloria Aldenhoff	Tom Ikesaki
Bill Adams	Sam Kamhawy
Rick Ashling	Pat Karney
Vic Von Aspern	Tom Kolby
Bob Baird	Wendy Kraus
Kathy Betts	Doug Kuhn
Linda Brewer	Lynn Marshall
Tony Catanzarite	Frank Munsey
Joe Cheatham	Gene Norris
John Connor	R. Rader
Kathy Cook	M.A. Skipper
Tom Cook	Greg Strudwick
Jon Drecher	Mark Thade
Charlene Givens	Jeff Thurman
Skip Harlan	Roger Whiting
David Hill	Jane Winkler
Bill Horst	Don Younts
Doug Humbert	

Competition Committee

Bob Campbell, Chairman
Al Goodman, Events and Equipment
John Glachino, Publicity

Equipment Suppliers

These companies and organizations contributed equipment and supplies to Operations Challenge '88

Pumps--Fairbanks Morse Pump Corp.
Valves--American Cast Iron Pipe Co.
Electric Controls/Piping--Metropolitan
St. Louis Sewer District
Pump Packing--John Crane, Inc.

Chlorine Emergency Repair
Kits--Indian Springs Mfg. Co., Inc.
Self Contained Breathing
Apparatus--Scott, Inc.

DO Meters and Probes--Yellow
Springs Instruments, Inc.
pH Meters and Electrodes--Orion
Research, Inc.
Microscopes--Nikon, Inc.
Microscope Slides--Frey Scientific Co.

Sewer TV Tape Monitors and
Recorders--CUES, Inc.
Collection System Tape/Log
Data--Washington Suburban
Sanitary Commission

Process Control Plant Data--City of
Fairfield, Ohio
Process Control Problem
Development--A.W. Goodman, Inc.



Left: NEW YORK WPCA, Central Chapter—Ken Skibinski (left), Steve Martin (standing), Richard White (right), and Jim Renk.



Below: NEW YORK WPCA, Long Island Chapter—Mark Wagner (right) works with Thomas Varley, Kenneth Price, and Terrence Hopper.



ARKANSAS WPCA team from Little Rock Utilities (clockwise): Roy Cannon (on the carpet), John Williams, Jeff Davis, and Thad Luther.

Overall Top Scores

RANK	TEAM	TIME
1.	CA, Oakland	51:58
2.	Pennsylvania	59:42
3.	FL, Tampa	60:17
4.	Central States Shovelers	62:06
5.	NY, Long Island	62:37
6.	New England	64:34
7.	TX, Dallas	65:33
8.	TX, Fort Worth	66:29
9.	Chesapeake	68:06
10.	CA, Southern	68:48

Operations Challenge '88



CENTRAL STATES WPCA "Pumpers" team came from several towns in three states. Jim Miller (shown above) joined Steve Hetzel, John Budzinski and Mark Surwillo.

Pump Maintenance Top Scores

RANK	TEAM	TIME
1.	CA, Oakland	4:19
2.	CA, Southern	5:18
3.	Chesapeake	5:38
4.	Pennsylvania	5:42
5.	TX, Fort Worth	5:56
6.	FL, Tampa	6:40
7.	FL, Gainesville	6:48
8.	Central States Shovelers	6:52
9.	Kansas	7:03
10.	SC, Spartanburg	7:32

Operations Challenge '88

Right: CENTRAL STATES WPCA "Shovelers" team included operators from Illinois, Minnesota, and Wisconsin. Andy Alvey (top) worked with John Fisher (right), Chuck Montgomery, and La Mont Albers.



Left: MISSOURI WPCA—Jerry Wallace (far left) worked with Ted Craig, Eugene Helsee, and Tom Stow. All came from different towns in Missouri.

Safety Top Scores

RANK	TEAM	TIME
1.	CA, Southern	3:32
2.	CA, Oakland	3:54
3.	New England	4:19
4.	Chesapeake	4:42
5.	SC, Spartanburg	5:11
6.	Pennsylvania	5:14
7.	NY, Central	5:22
8.	Indiana Greaseballs	5:34
9.	TX, Fort Worth	5:53
10.	FL, Tampa	5:59



Above: INDIANA WPCA—Team from Indianapolis included Stuart Davis (above right), Kim Cussen, James Carney and Dennis Hoff.



Left: INDIANA WPCA—Team from Valparaiso and Noblesville included Dick Condon (right), Ricky Dodd, Ruth Gorski, and Don Anthis.

Right: IOWA WPCA—Team from Newton was the only three-person team in the competition. Shown are Paul Vanous (left), Scott Hindman (center) and Gordon Brand (right).



Operations Challenge '88

Below: KANSAS WPCA—All Star team included Ed Taylor, Ben Jilka, Tom Cook and Joe Maris.



Below: TEXAS WPCA—"Cowtown Sludge Busters" from Fort Worth included (from left) Gary Burton, Efran Caban, Jim Frazier, and Ron Carlson.



Above: TEXAS WPCA—Team from Dallas Water Utilities included (from left) Dawn Grimes, Bobby Butler, and Mark Stephens. James Ryan was also on the team.



Right: CALIFORNIA WPCA—Southern Calif. team represented Irvine Ranch and Riverside. Shown are Mark Gingras (bottom left), Craig Walsh (top) and Wayne Posey (right). Another team member was Greg Stenkey.

Below: NEW ENGLAND WPCA—"Mainly New Englanders" included (from left) Patrick Clothier, Gary Howard, John Hart, and Mark Lorello.



Laboratory Top Scores

RANK	TEAM	TIME
1.	FL, Tampa	9:25
2.	CA, Oakland	9:49
3.	Pennsylvania	11:09
4.	Central States, Pumpers	12:28
5.	CA, Southern	13:06
6.	Iowa	14:34
7.	Chesapeake	14:57
8.	Indiana, Microns	15:01
9.	TX, Dallas	16:12
10.	Arkansas	16:20

Process Control Top Scores

RANK	TEAM	TIME
1.	Central States, Shovelers	6:53
2.	NY, Long Island	9:14
3.	Kansas	10:00
4.	CA, Oakland	10:56
5.	TX, Fort Worth	10:59
6.	TX, Dallas	11:21
7.	Indiana, Microns	11:38
8.	FL, Tampa	12:01
9.	Iowa	12:09
10.	New England	12:19



Above: NEBRASKA WPCA—Allen McFarling (lower right) worked with Bill Holling and Rick Sibert. Not pictured: team member Betty Harrison.
 Left: FLORIDA WPCA—Louis Bergman (right) and George Lomax (on floor) assist Bill Braun and Odis Berry, all from the Gainesville Regional Utility.

Operations Challenge '88

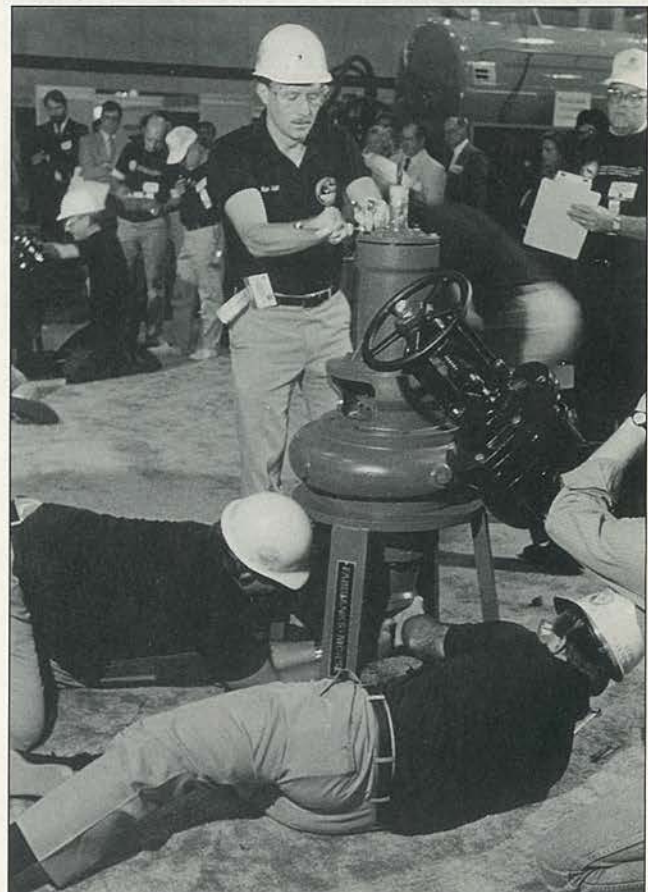
Below: CHESAPEAKE WPCA—Team members from Anne Arundel County Dept. of Utilities were Ron Kremer, Greg Swartz, Pat Wingfield, and Tom Burke.

Collection Systems Top Scores

RANK	TEAM	TIME
1.	NY, Long Island	19:00
2.	Missouri	19:30
3.	Pennsylvania	19:30
4.	TX, Dallas	19:41
5.	SC, Spartanburg	19:43
6.	NY, Central	20:00
7.	Central States Shovelers	21:00
8.	Arkansas	21:30
9.	FL, Gainesville	22:05
10.	Chesapeake	22:14



Above: WPCA OF SOUTH CAROLINA—Spartanburg team featured Keith Smart, George Martin, David Hughy and Karen Reece.



Right: WPCA OF SOUTH CAROLINA—Charleston team included Kin Hill (standing) and Andy Fairey (left). Other team members were Leroy Cummings and Andy Young.