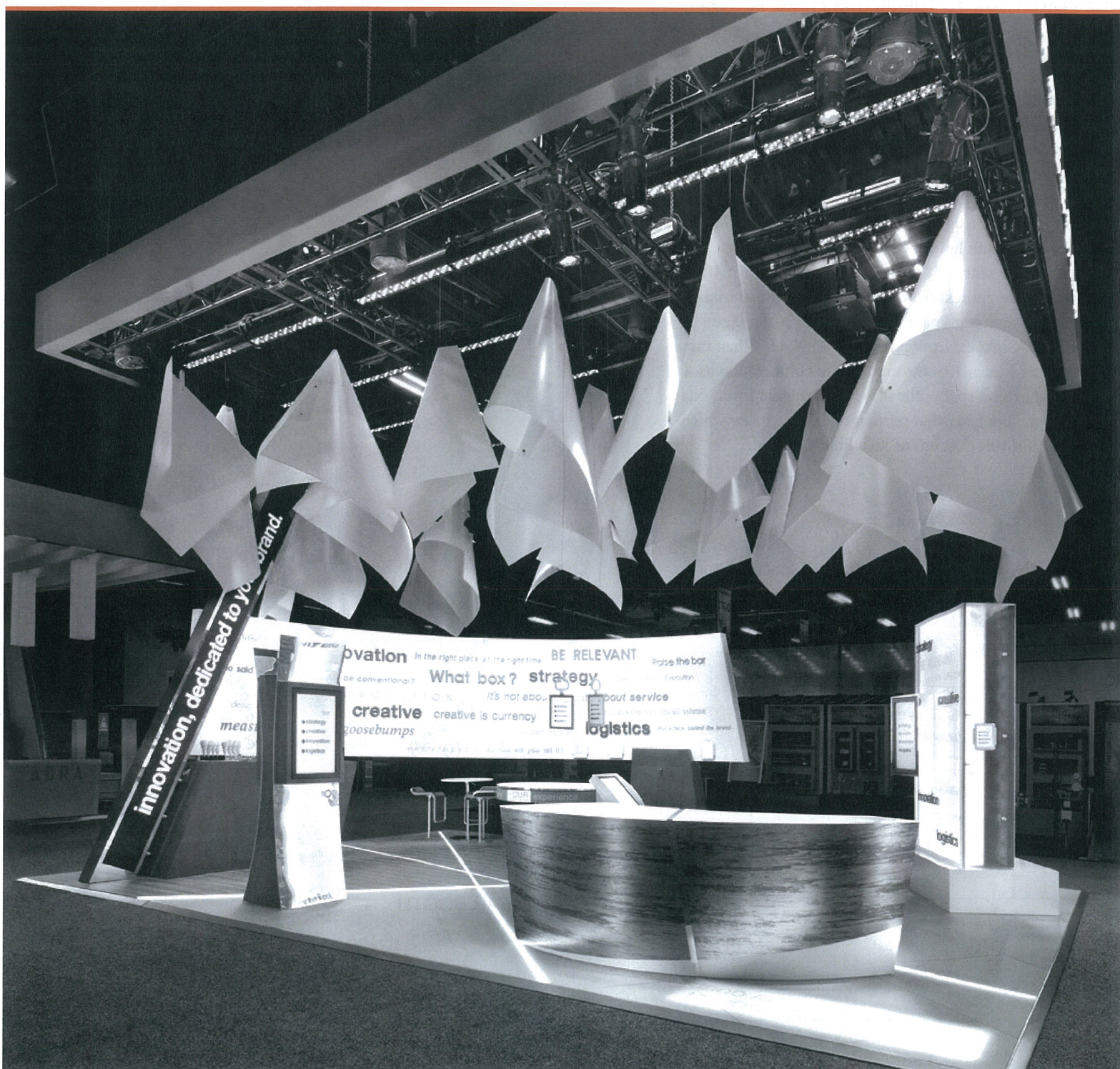




# Guidelines for Display Rules & Regulations 2014 Update





## Linear Booth

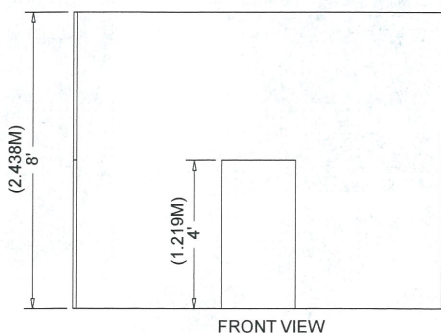
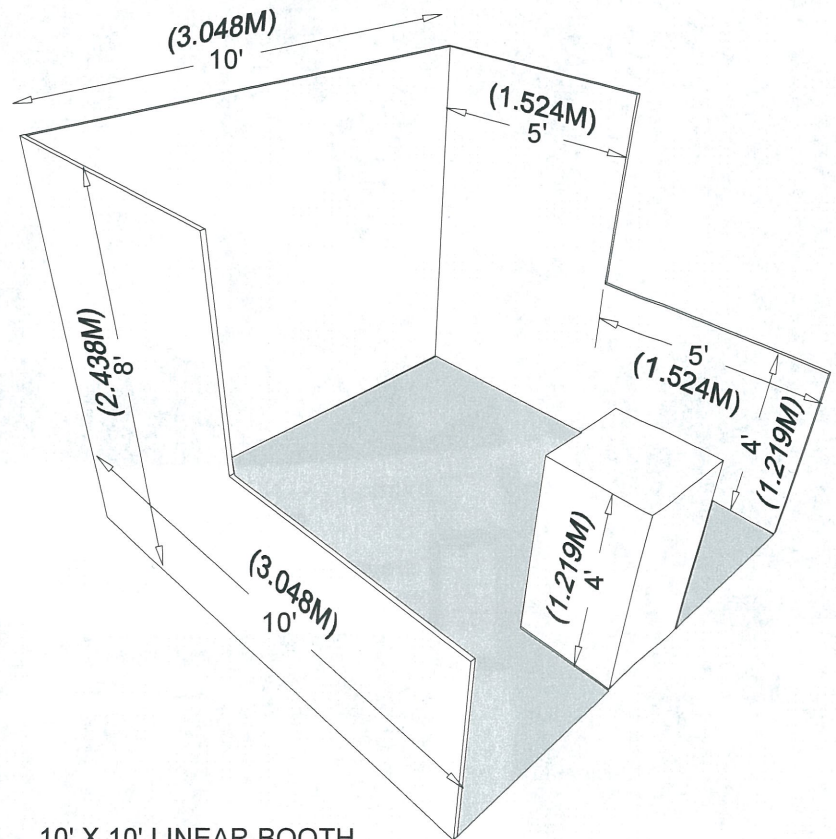
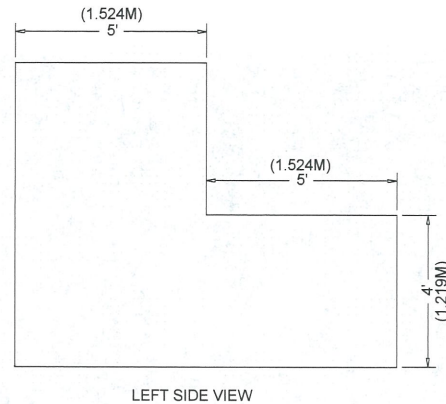
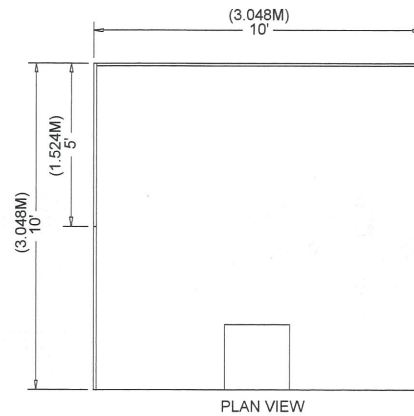
Linear Booths, also called “in-line” booths, are generally arranged in a straight line and have neighboring exhibitors on their immediate right and left, leaving only one side exposed to the aisle.

### Dimensions

For purposes of consistency and ease of layout and/or reconfiguration, floor plan design in increments of 10ft (3.05m) has become the de facto standard in the United States. Therefore, unless constricted by space or other limitations, Linear Booths are most commonly 10ft (3.05m) wide and 10ft (3.05m) deep, i.e. 10ft by 10ft (3.05m by 3.05m). A maximum back wall height limitation of 8ft (2.44m) is specified.

### Use of Space

Regardless of the number of Linear Booths utilized, e.g. 10ft by 20ft (3.05m by 6.10m), 10ft by 30ft (3.05m by 9.14m), 10ft by 40ft (3.05m by 12.19m), etc. display materials should be arranged in such a manner so as not to obstruct sight lines of neighboring exhibitors. The maximum height of 8ft (2.44m) is allowed only in the rear half of the booth space, with a 4ft (1.22m) height restriction imposed on all materials in the remaining space forward to the aisle. (See Line-of-Sight exception on page 8.) Note: When three or more Linear Booths are used in combination as a single exhibit space, the 4ft (1.22m) height limitation is applied only to that portion of exhibit space which is within 10ft (3.05m) of an adjoining booth.



## Corner Booth

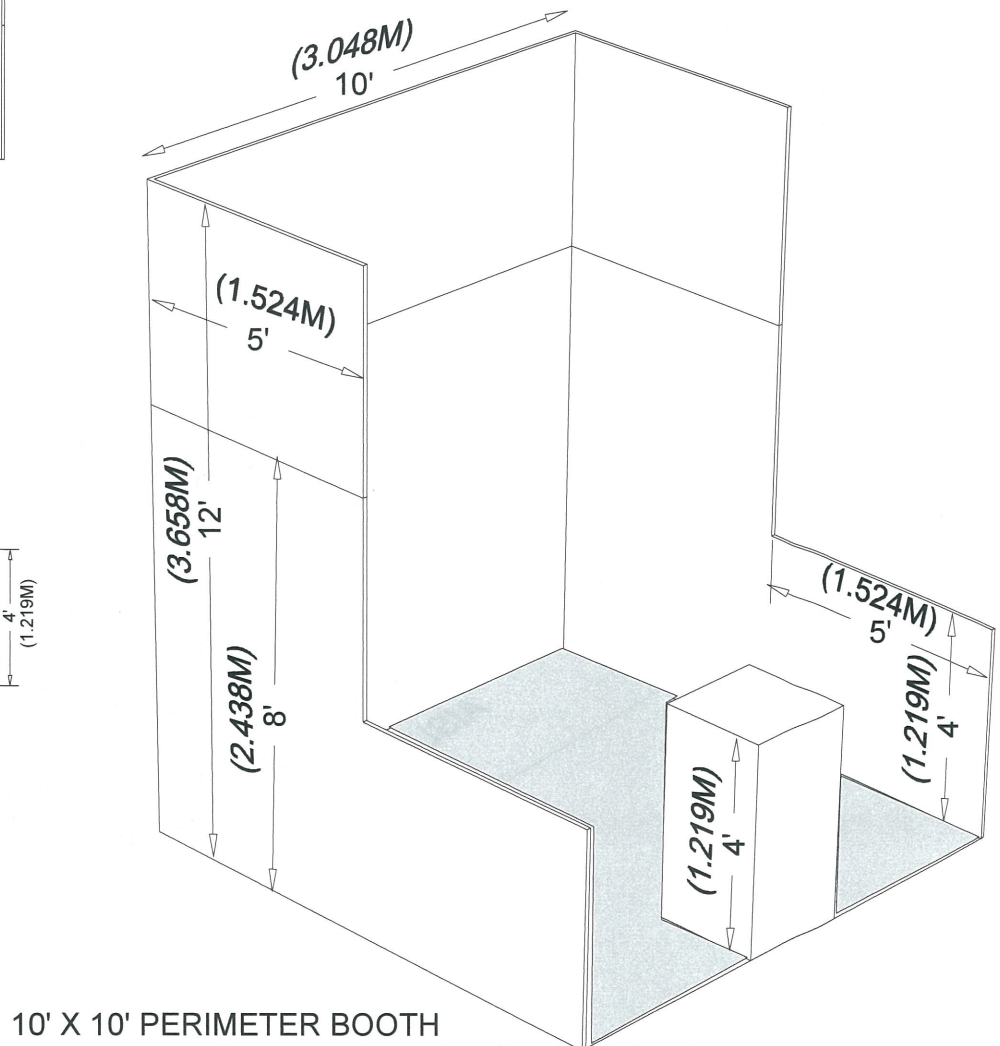
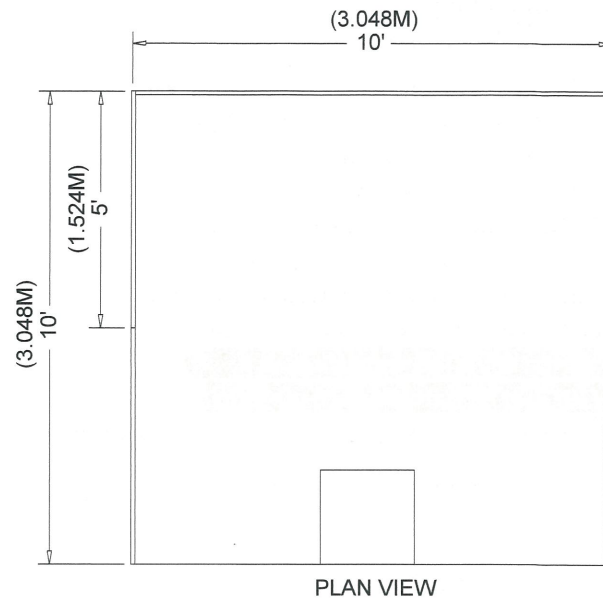
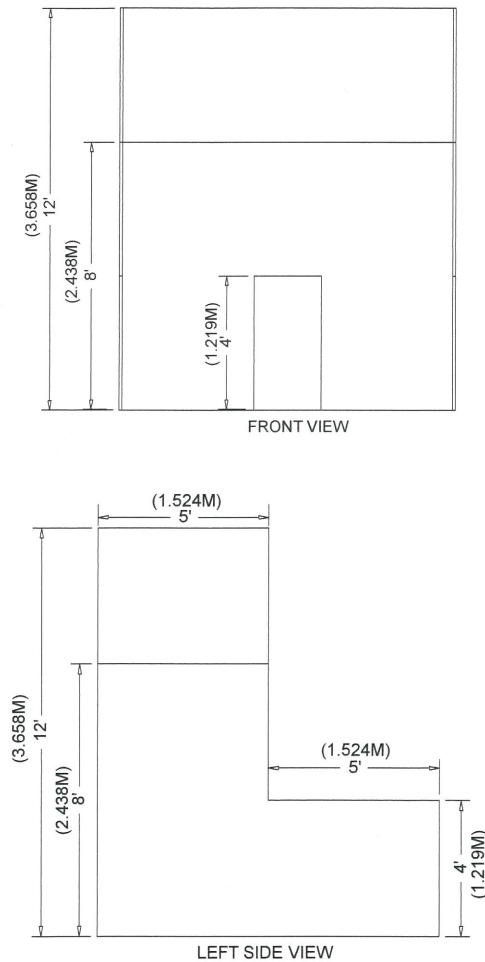
A Corner Booth is a Linear Booth at the end of a series of in-line booths with exposure to intersecting aisles on two sides. All other guidelines for Linear Booths apply.

## Perimeter Booth

A Perimeter Booth is a Linear Booth that backs to an outside wall of the exhibit facility rather than to another exhibit.

### Dimensions and Use of Space

All guidelines for Linear Booths apply to Perimeter Booths except that the maximum back wall height is 12ft (3.66m).

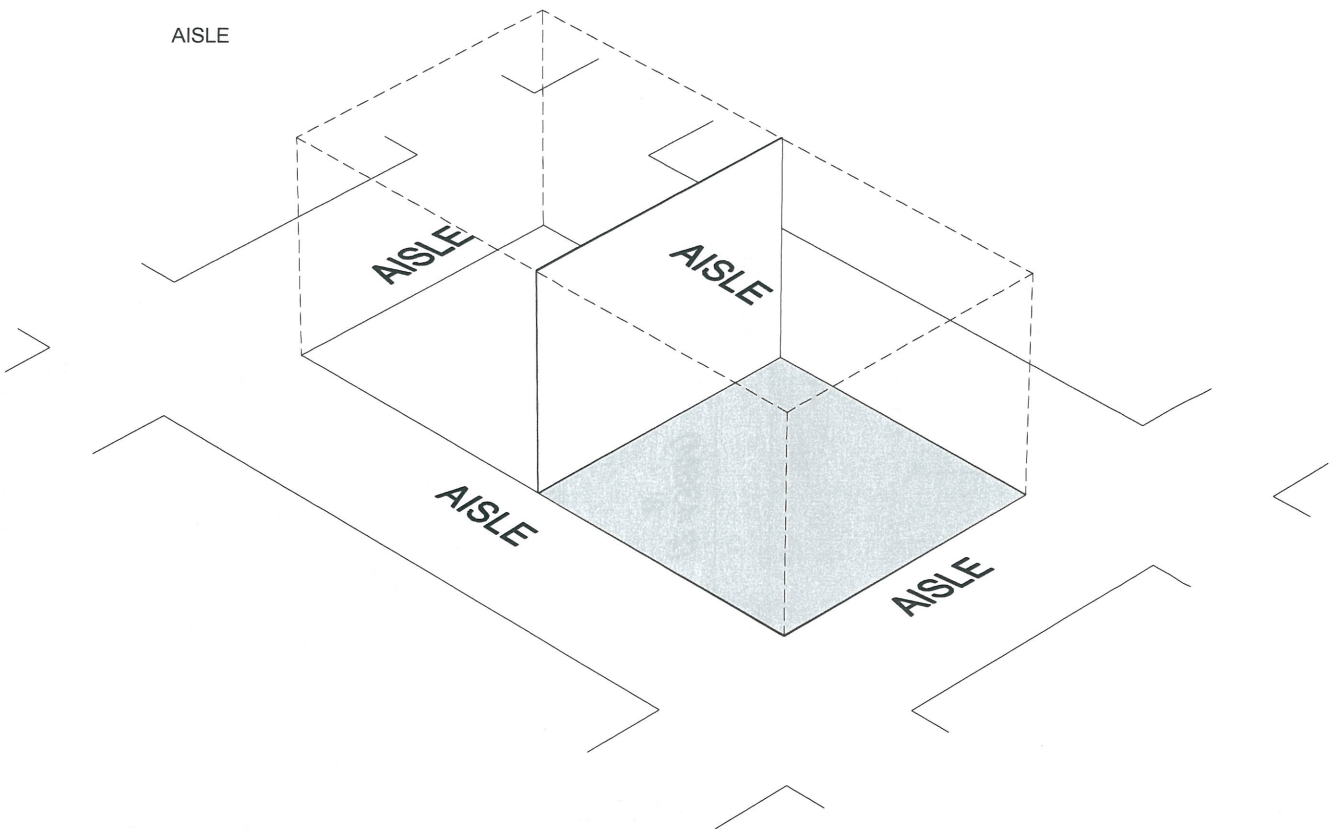
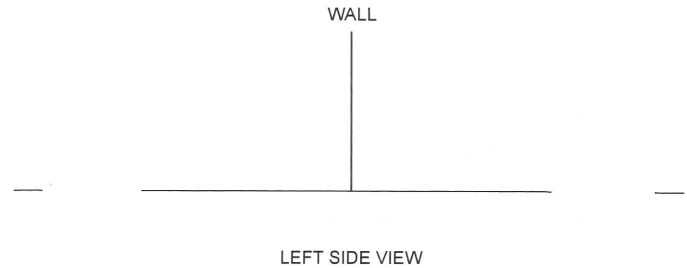
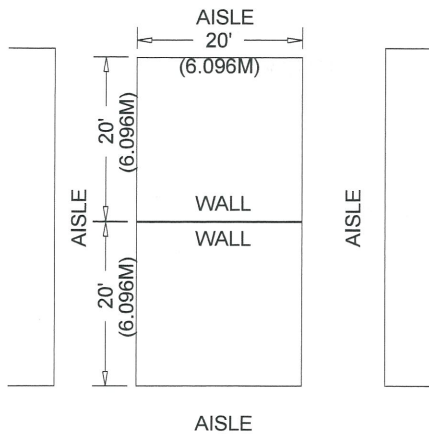


## Split Island Booth

A Split Island Booth is a Peninsula Booth\*which shares a common back wall with another Peninsula Booth. The entire cubic content of this booth may be used, up to the maximum allowable height, without any back wall Line-of-Sight restrictions. Maximum allowable display height is 18ft, and maximum hanging sign height is 18ft. to the top of the sign. The entire cubic content of the space may be used up to the maximum allowable height.

Double-sided signs, logos and graphics shall be set back ten feet (10') (3.05m) from adjacent booths.

\*WEF does not assign booths typically defined as Peninsula or End Cap booths.



SPLIT ISLAND BOOTH



## Island Booth

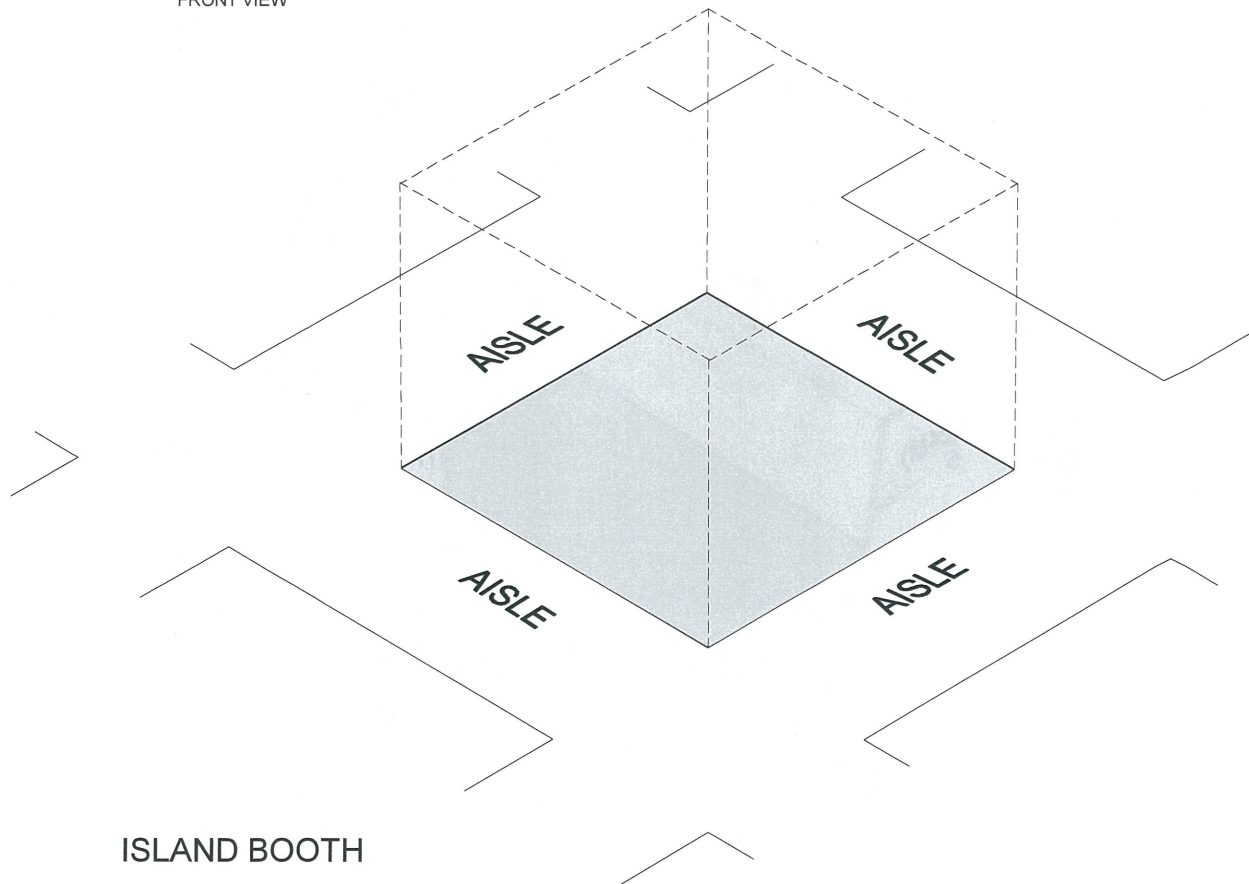
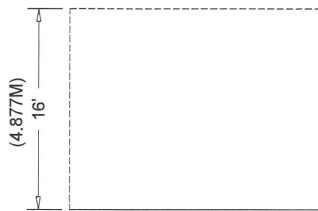
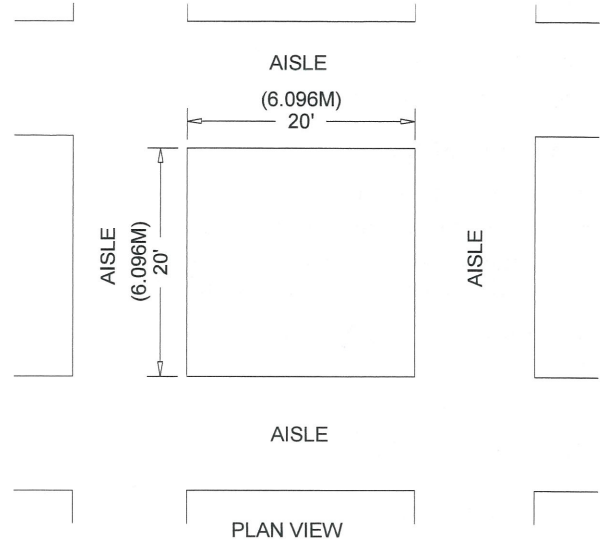
An Island Booth is any size booth exposed to aisles on all four sides.

### Dimensions

An Island Booth is typically 20ft by 20ft (6.10m by 6.10m) or larger, although it may be configured differently.

### Use of Space

The entire cubic content of the space may be used up to the maximum allowable height, which is 18ft for WEFTEC, including signage. Specifically, a maximum display height of 18ft and a maximum hanging sign height of 18ft at the top of the sign.

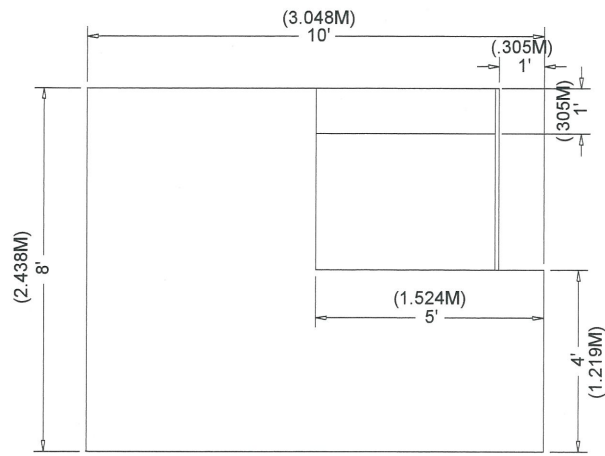


## Extended Header Booth 20ft (6.10m) or Longer

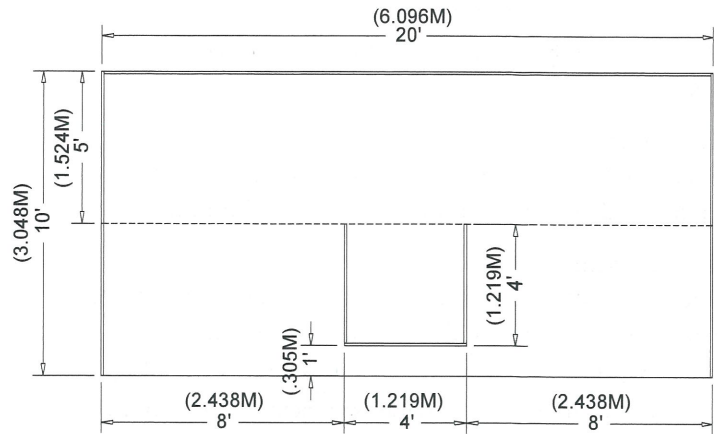
An Extended Header Booth is a Linear Booth 20ft (6.10m) or longer with a center extended header.

### Dimensions and Use of Space

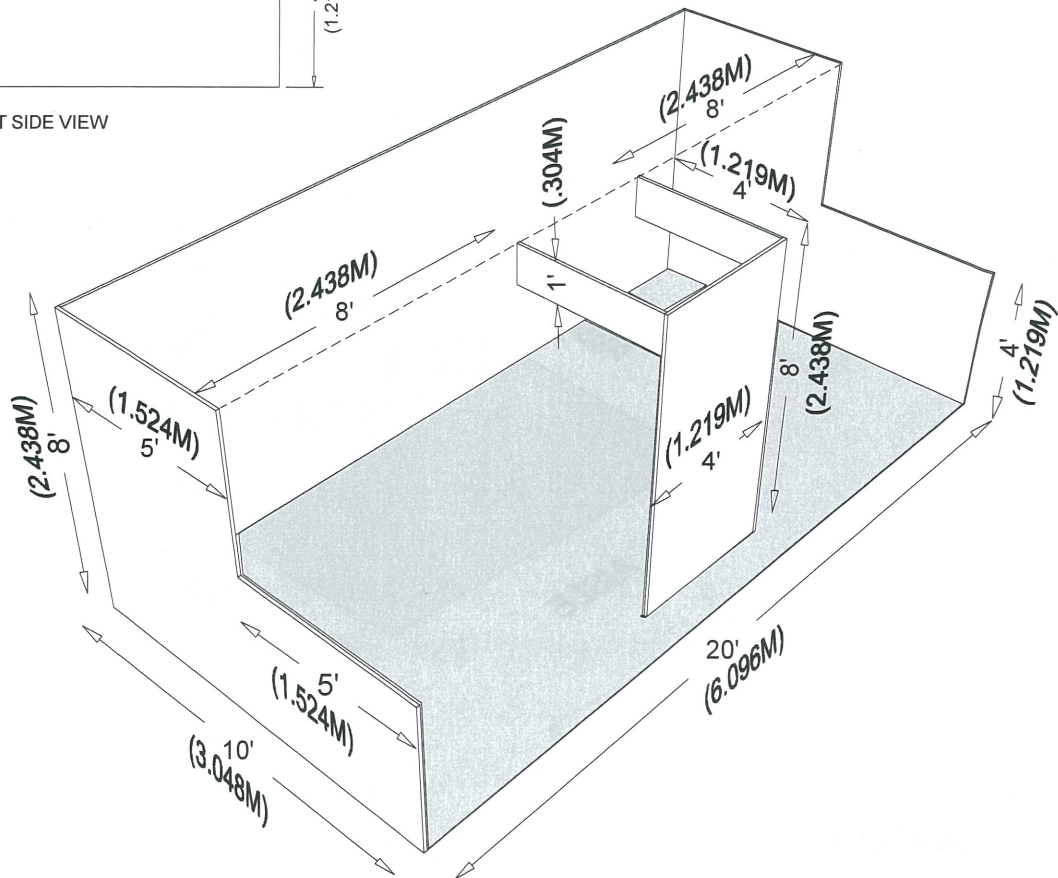
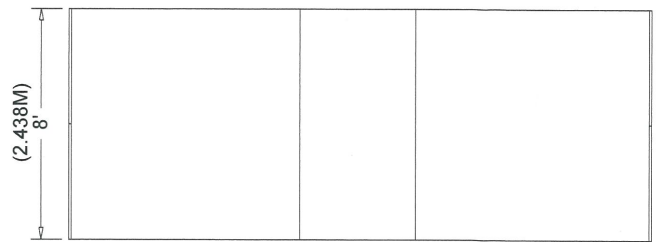
All guidelines for Linear Booths apply to Extended Header Booths, except that the center extended header has a maximum height of 8ft (2.44m), a maximum width of 20 percent of the length of the booth, and a maximum depth of 9ft (2.7m) from the back wall.



LEFT SIDE VIEW



PLAN VIEW



10' X 20' EXTENDED HEADER BOOTH